





Firmware Upgrade Procedure

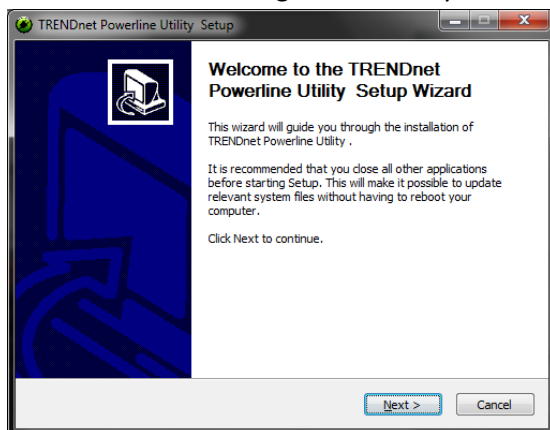
Note: You must install and use the Powerline utility application to upgrade the device firmware.

Powerline Utility System Requirements

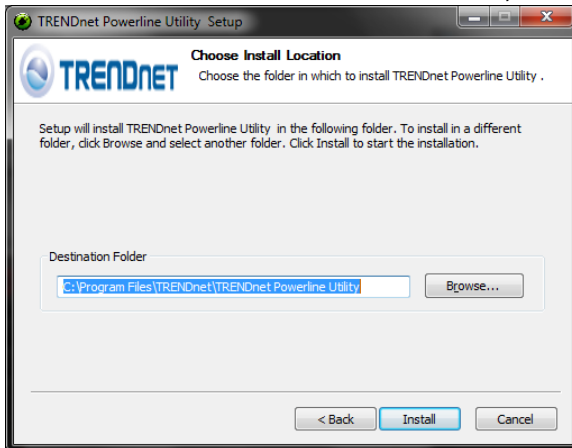
- Windows 7 (32/64-bit), Windows Vista (32/64-bit), or Windows XP (32/64-bit)
 - Microsoft® .NET Framework 2.0 installed (Included with CD installation, if you are installing the utility through the CD, please ensure that you have .NET Framework 2.0 installed. If not, please download and install using instructions from the Microsoft® website.)
1. Make sure you connect your PC directly to the device via the network cable when upgrading the device firmware.
 2. Save the zipped firmware file (.zip) to your PC
 3. Extract the .zip file to your PC.
 4. In the folder contents, start the Installation wizard for the Power Utility by double-clicking the Setup.exe. Note: The software utility is required in order to upgrade the firmware
If you have already installed the software utility, skip over to Step 13.

	Firmware Upgrade Procedure.pdf	10/28/2010 3:52 PM	PDF File
	MAC-QCA7420-v1.0.0-01-X-FINAL.nvm	3/9/2012 3:33 PM	NVM File
	Setup.exe	5/17/2012 9:30 AM	Application
	TPL406EA1_PIB103NA_WM.pib	4/27/2012 6:57 AM	PIB File

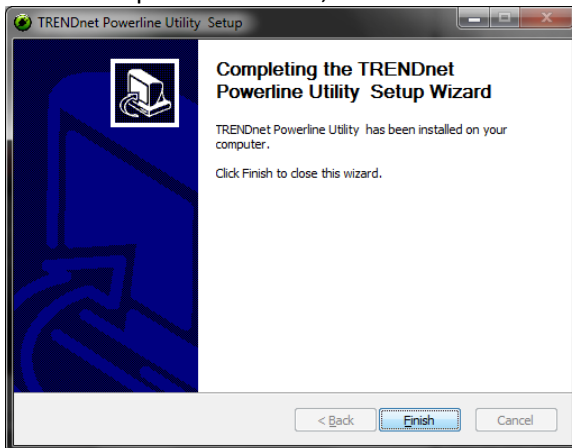
5. At the Powerline Configuration Utility installation window, click **Next**.



6. At the Install Location installation window, click **Install**.

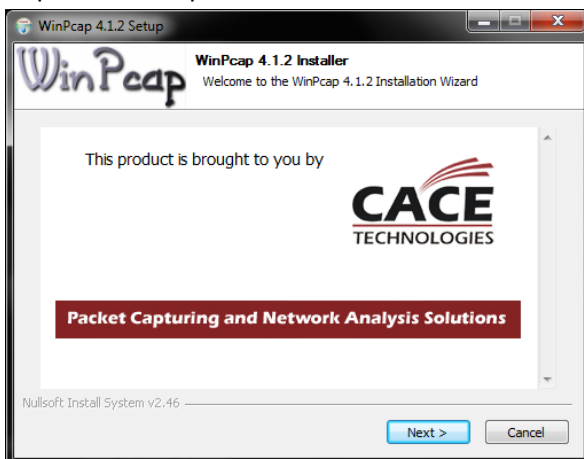


7. In the Completion window, click **Finish**.

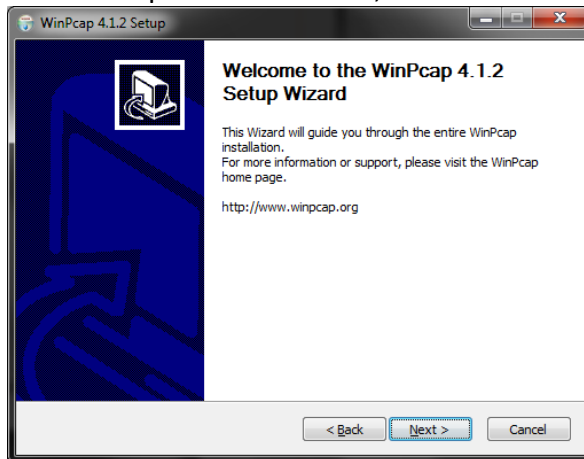


8. At the WinPcap installer window, click **Next**.

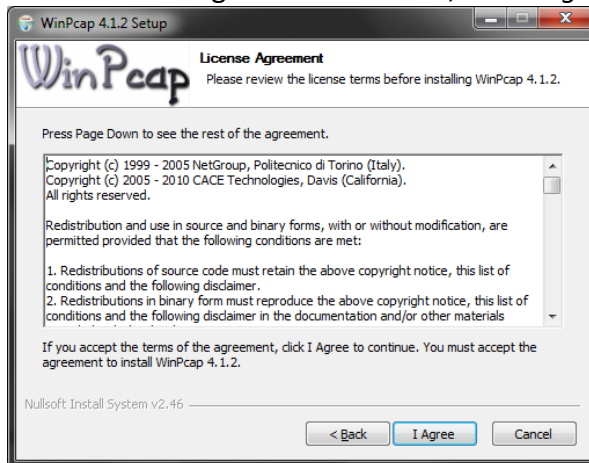
Note: The Powerline Configuration Utility requires the use of the WinPcap application. If this prompt does not appear, you may already have the WinPcap application installed. If so, please skip over to Step 13.



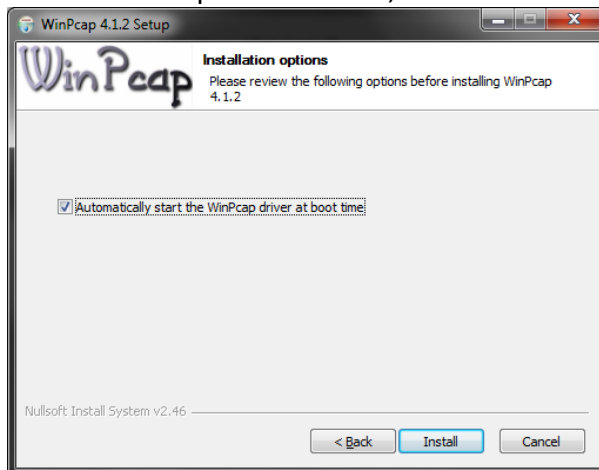
9. In the Setup Wizard window, click *Next*.



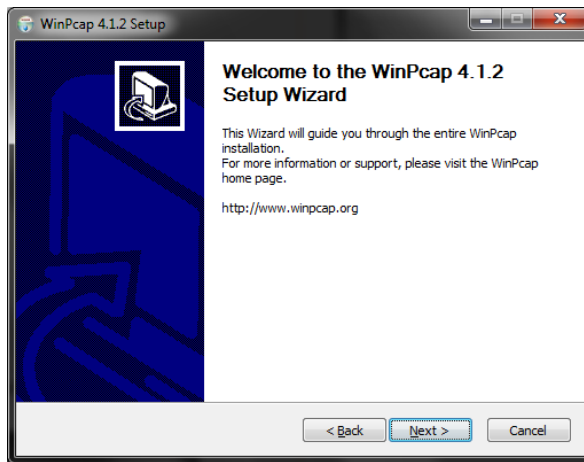
10. In the License Agreement window, click *I Agree*.



11. In the Install Options window, click *Install*.



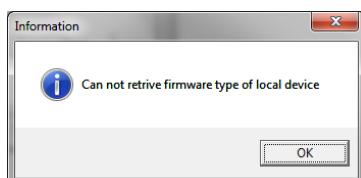
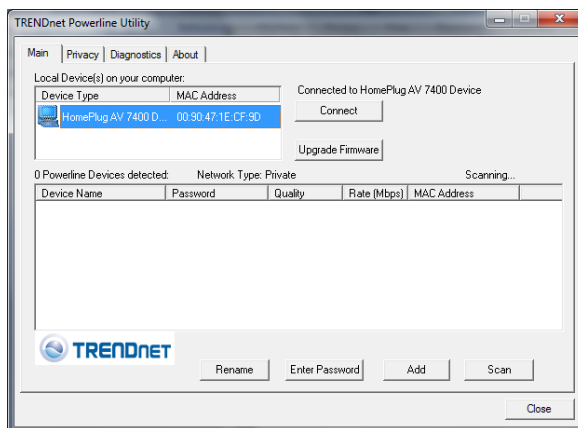
12. At the Setup Wizard Completion window, click *Finish*.



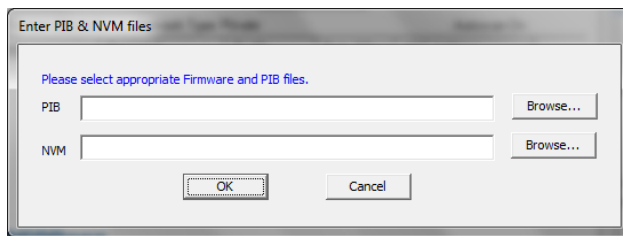
13. If the utility does not automatically appear, double-click the software utility icon on your desktop.



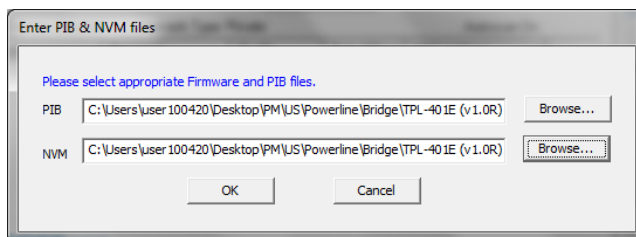
14. The device should appear in the Main window of the utility under Local Device. Click Upgrade Firmware. Note: You may or may not receive the information window. If so, click OK.



15. Click Browse next to the PIB field and navigate to the unzipped folder with the firmware files. Select the PIB file. (Ex. TPL-401E-PIB-v50100.pib)



16. Click Browse next to the NVM field and navigate to the unzipped folder with the firmware files. Select the NVM file. (Ex. TPL-401E-NVM-v5.0.1-0-0-X-FINAL.nvm) Then click OK.



17. Wait until the firmware upload completed and the device reboot
- Important!** Do not turn off the device or press the reset button while this procedure is in progress.